
Coastal Cruising In the Salish Sea

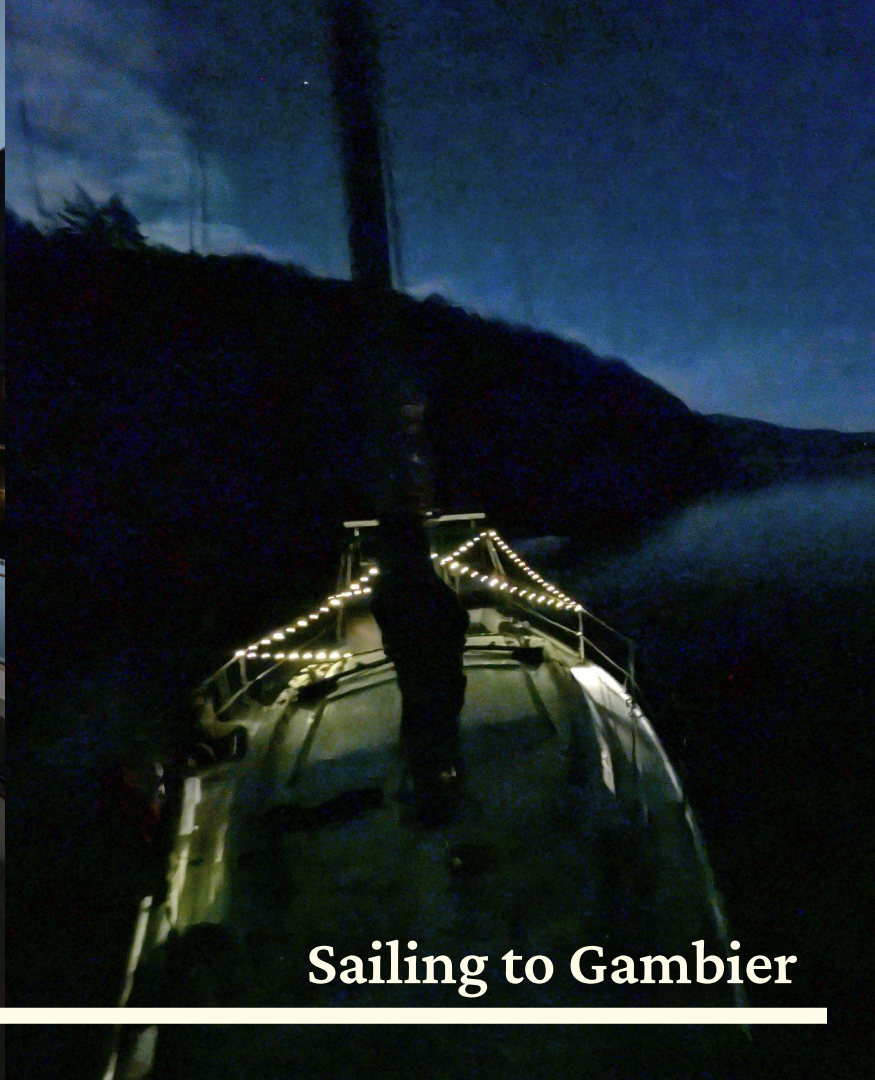
A photograph of a sailboat on the water in a coastal setting. The sailboat is white with a dark hull and a tall mast. The water is blue and calm. In the background, there are green hills and a clear sky. The text "Coastal Cruising In the Salish Sea" is overlaid in large white letters at the top.

Getting Started

SV. Someday



Sailing to Gambier



Sailing to Gambier



Sailing to Gambier

What I didn't tell you:

- Got a late start, anxious about sunlight
- Anchored twice, anxious about swing and holding
- Cold night spent bouncing in ferry wake

Goals



Giving a framework for skippers to plan their own trips

Outline

Part 1: The Salish Sea

Part 2: Trip Planning Tools and Considerations

Part 3: Planning your trip - Where to go, what can go wrong

An aerial photograph of the Salish Sea coastline, showing a rugged mountain range on the left and a complex network of rivers and fjords on the right. The water is a mix of dark blue and light grey, indicating varying depths and currents. The text 'The Salish Sea' is overlaid in white on the left side.

The Salish Sea

Your playground

1000 + islands

Strong tidal currents

Excellent anchorages within a day of Vancouver

Consistent summer breezes

Cool towns, secluded islands



Powell R.

Squamish

Vancouver

Gibsons

Sechelt

Bellingham
(USA)

Comox

Parksville

Nanaimo

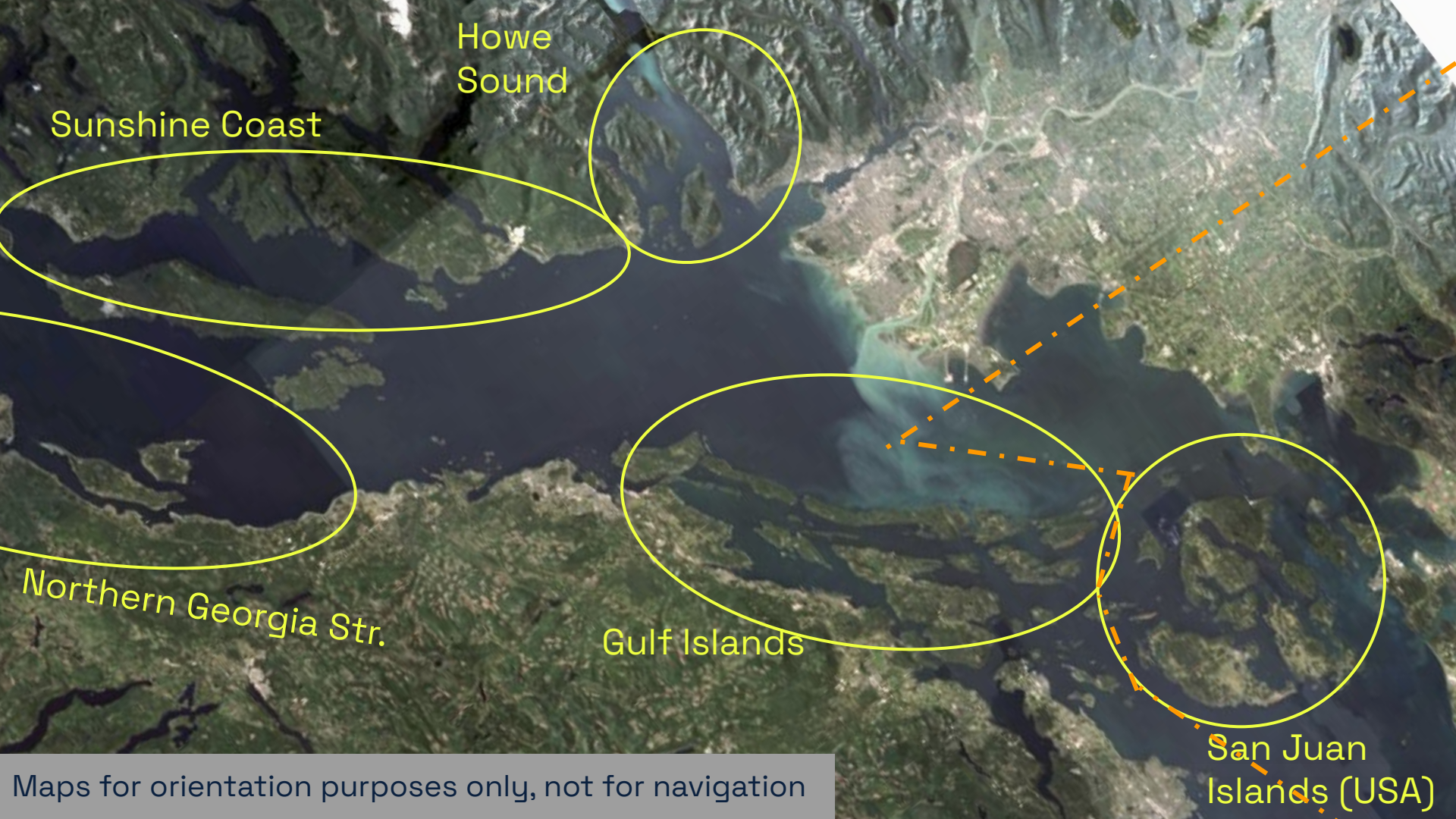
Sydney

Friday
Harbour

North

Victoria

Maps for orientation purposes only, not for navigation



Howe
Sound

Sunshine Coast

Northern Georgia Str.

Gulf Islands

San Juan
Islands (USA)

Maps for orientation purposes only, not for navigation



Gambier Isl.

Bowen Isl.

Lasqueti Isl.

Texada Isl.

Orcas Isl.

Hornby Isl.

Salt Spring Isl.

DO NOT ENTER
Area "WG"
Torpedo and submarine testing
Appx area shown.

Denman Isl.

Maps for orientation purposes only, not for navigation

Flood Tides



Ebb Tides

Part 2 - Trip Planning Framework

Route - Often not decided until a few days before. Fit the trip to the conditions.

Tides - Check tide tables, tidal runs (narrows) and plan what time you hope to be somewhere. Always plan to cross narrows at slack tide.

Distance / Time - What is our average sailing speed over ground, average motoring speed?

Anchorage - Weather exposure, depth, holding... choose one, but have backup plans. The sun can set quickly!

Float Plan - file with a responsible person. Give clear instructions on what they're supposed to do.

Provisioning

Water and Food

2 Litres of water per person per day (minimum)

Plus 50%

Food under sail

Pre-make in the morning.

Easy to eat one-handed at sea. Sandwiches, wraps, fruit, trail mix.

Consider hot coffee or soup in a thermos.

Crew Comfort

Layers: Fleece, wool, wet weather gear

Sunscreen and sunglasses always

Heavy seas: Take medication 1hr before leaving

Lots of warm good food. Good food is HUGE for morale on bad days.

Boat Readiness

Full fuel

Engine oil, impellers, belts (spares onboard)

Anchor lights, running lights checked

Galley secured
All your stuff will be tossed around.

Cockpit cleared and safe

Choosing an Anchorage

Check the wind and swell

Will you be bumped around all night?
Check the exposure direction.

Check the bottom

Consider the type of anchor you have.

Check the Depth

Depth at low tide, not arrival time

Calculate the Scope

5:1 minimum

7:1 in bad weather

Anchorage - *Someday* Specific

Check the bottom

Someday has a Plow anchor, Digs into seafloor quickly.

Best in: Sand, Mud, Gravel, Weeds

...OK in: Rocky, corals, etc.

Check the Depth

Someday's keel draws ~6ft ~2 meters

Someday's depth sounded calibrated to bottom of keel.

Minimum safe anchoring depth (...?) At low tide

Calculate the Scope

From the freeboard

(add ~4ft)

Someday has 75ft of chain, 125ft of rode.

Max anchoring depth - TOTAL, not under keel...

5:1 minimum 7:1 in bad weather

30-40 ft - 25-30 ft

On depth sounder:

20-30ft 15-20ft

Anchorage - *Someday* Specific

Ideal Anchorages

Lowest tide - at least 10-15 feet

High tide - maximum 30-40ft (good weather)
 25-30ft (bad weather)

Mud, Sand, Gravel bottom

150ft of rode

200ft of rode

Swing Radius

Radius - 150ft

Radius = 200 feet

= 5 boat lengths

= 7 boat lengths

Distance - How far can I go?

Someday

Motoring speed ~ 3.5 kts	Sailing speed ~6 kts	Theoretical hull speed ~ 6.7 kts	Andrew's maximum speed ~8.4 kts (tide, wind, swell)
8 hours = 28 nm	8 hours = 48 nm	8 hours = 54 nm	8 hours = 65 nm

Motoring
~ 3.5 kts

8 hours
= 28 nm

Sailing
~6 kts

8 hours
= 48 nm

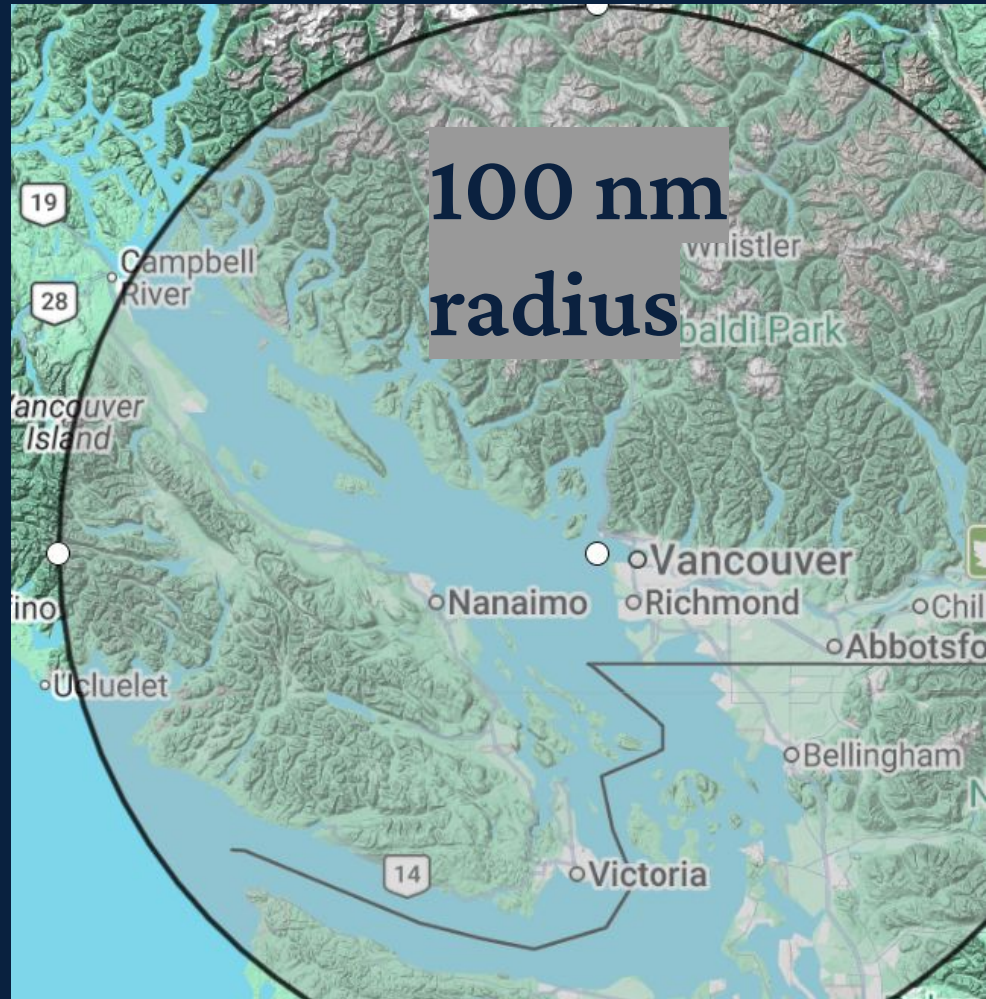


Someday Fuel Range

With full fuel, you can get home from almost anywhere in the Salish Sea.

Someday
80 L fuel tank, 2.5 L/hr burn

Range at 3kts = 100 n.miles
>>> This would take ~30 hours



Time - When should I start?

Scenario

Today's plan:

Leaving Nanaimo (Saysutshun)

Transiting Dodd Narrows

Anchoring somewhere in the Gulf Islands

Time - *Transiting Dodd Narrows*



Time - *Transiting Dodd Narrows*

DODD NARROWS

HNP(UTC-8h) **June-**

Turns		Maximum	
Day	Time	Time	Knots
1		0105	+3.3
	0334	0650	-5.6
MO	1006	1328	+7.7
	LU 1721	2019	-5.1
	2328	0144	+3.1

Calculating Transit Time:

1. Determine *slack water times*
(+/- 1 hour)
2. Determine *motoring or sailing time*
from anchorage
For this example, 1 hour
3. Determine *Readiness Time*
(anchor, coffee, etc)
For this example, 1 hour
4. Determine "*Buffer Time*"
Today, 1 hour early

Time - *Transiting Dodd Narrows*

DODD NARROWS

HNP(UTC-8h) June-

	Turns	Maximum		
s	Day	Time	Time	Knots
9	1		0105	+3.3
2		0334	0650	-5.6
8	MO	1006	1328	+7.7
	LU	1721	2019	-5.1
2		2328	0144	+3.1

Motoring from anchorage to Dodd = 1 hour
 Raising anchor, getting ready = 1 hour
 Want to arrive 1hr early.

Is UTC-8 correct?

NO - PDT (summer) Is UTC-7

Turn times (PDT time)

04:34

11:06

18:21

00:28am

Start at...

7:00 am

Turn window (+/- 1)

3:34-5:34

10:06-12:06

17:21-19:21

23:28-01:28

Weather Forecast

WeatherOffice.gc.ca

Environment Canada

Marine Zone Forecasts

Windy / WindFinder

best visual tools. Toggle wind, swell, and current.

VHF Weather

161.65 Mhz - Comox marine weather

SailFlow / PredictWind

good for long term passage planning.

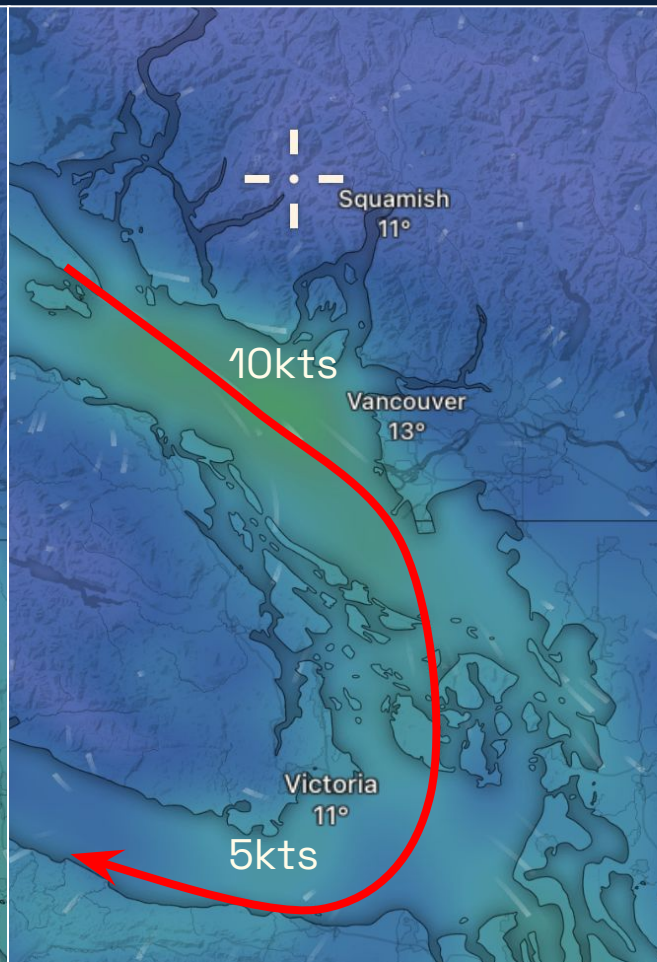
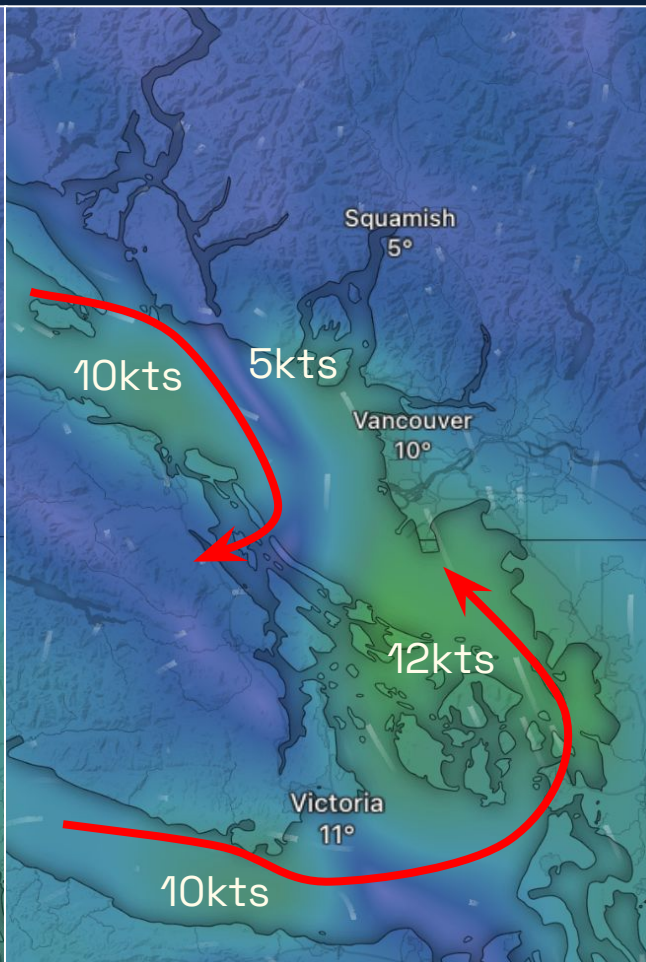
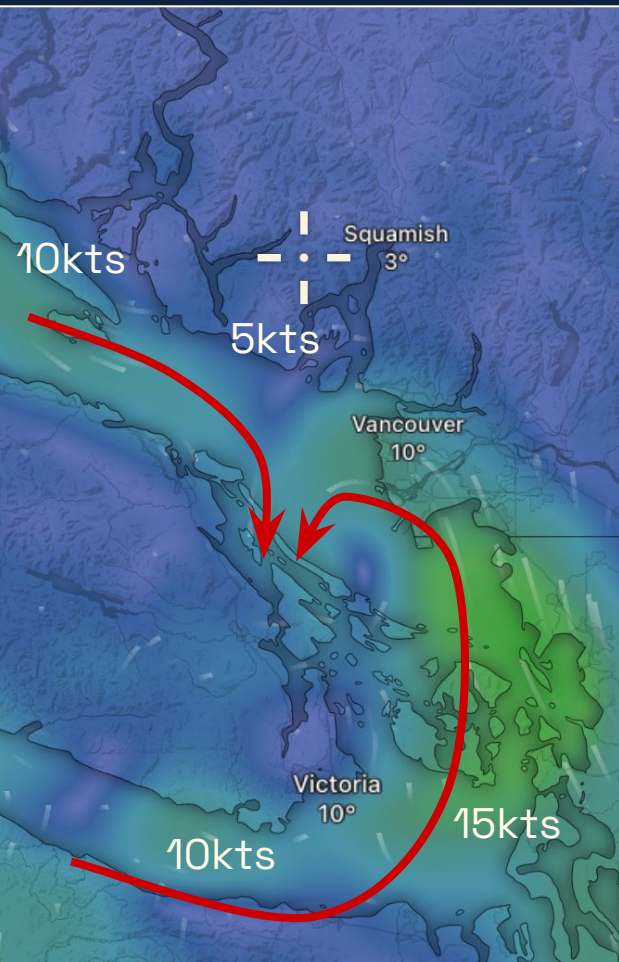
Monday

Wind Speed

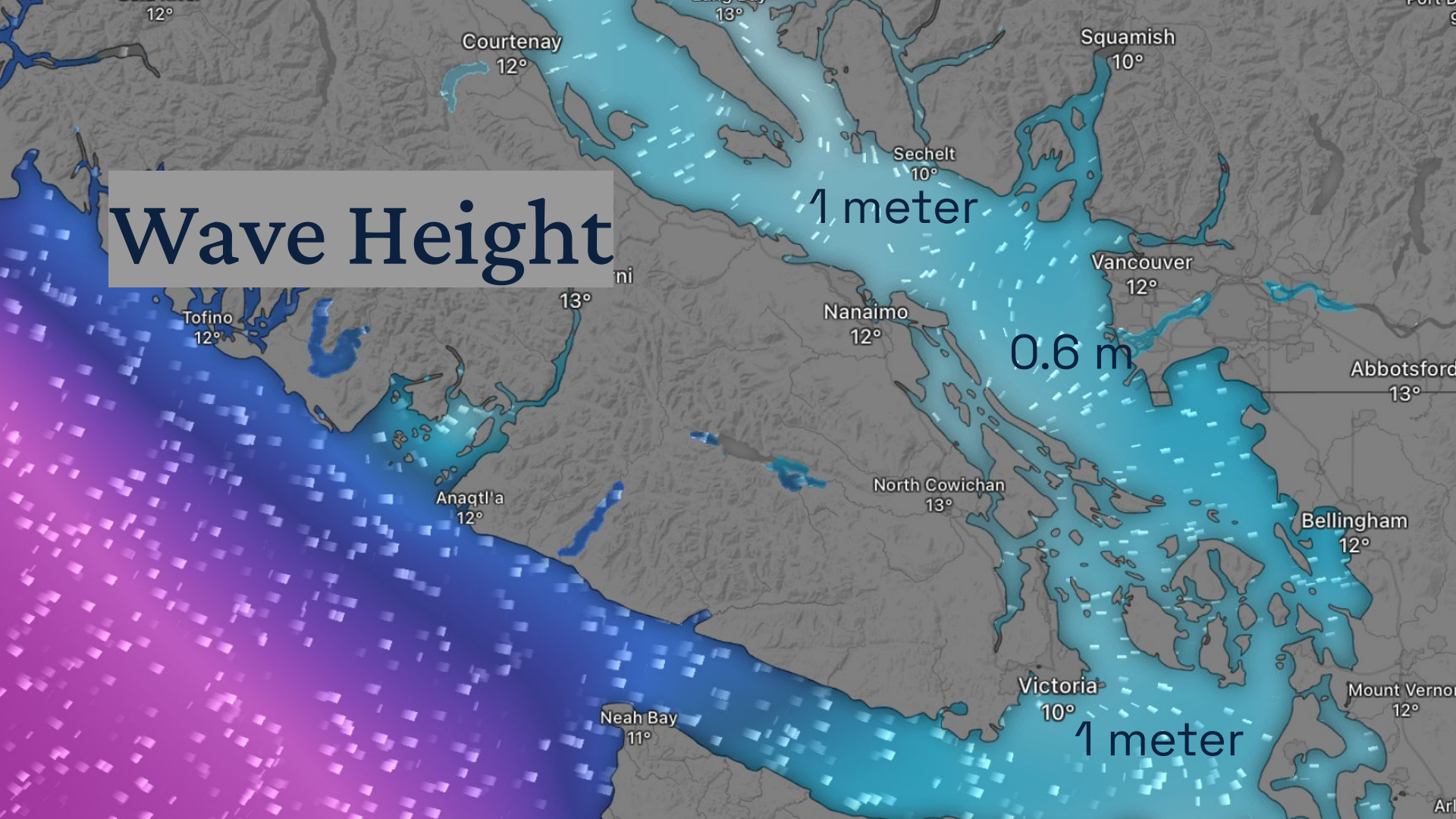
Tuesday

Wind Speed

Wednesday



Wave Height



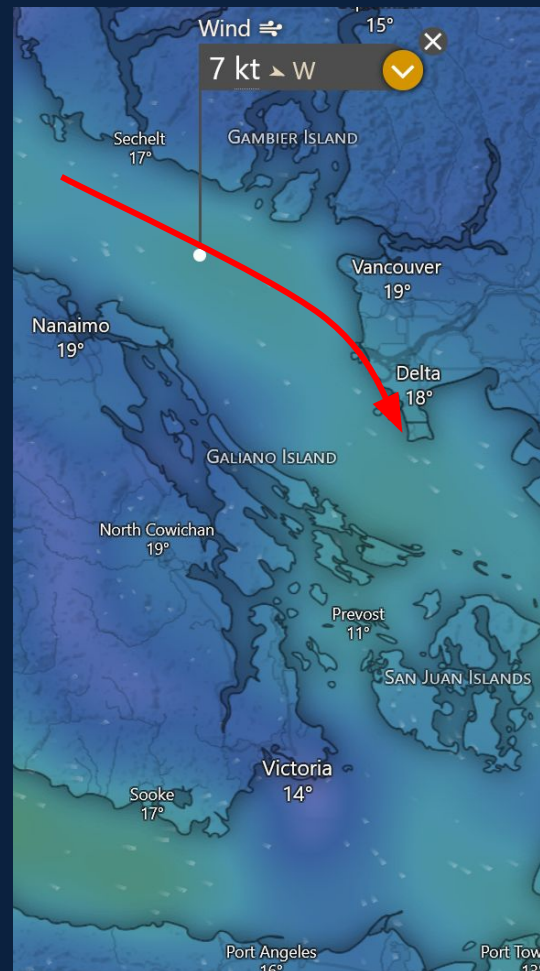
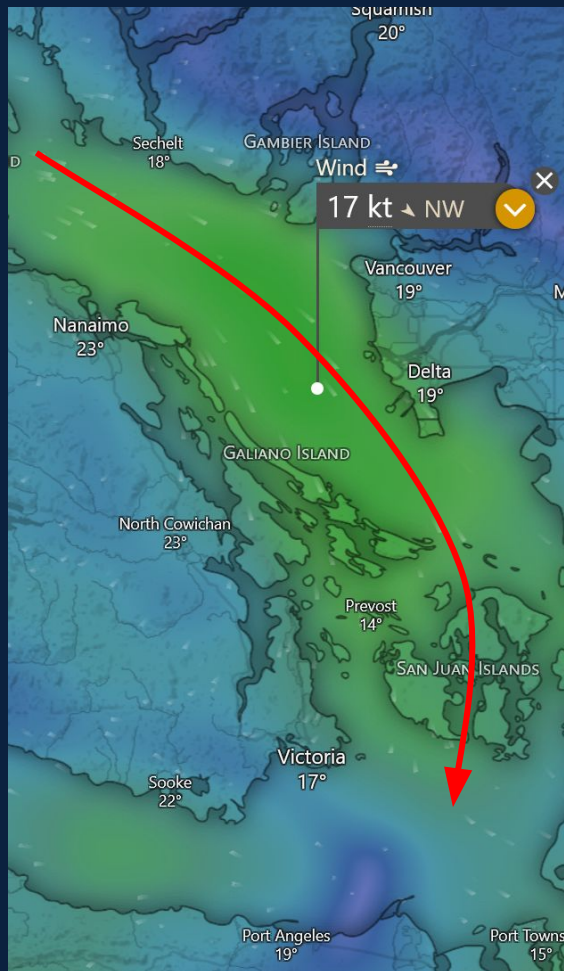
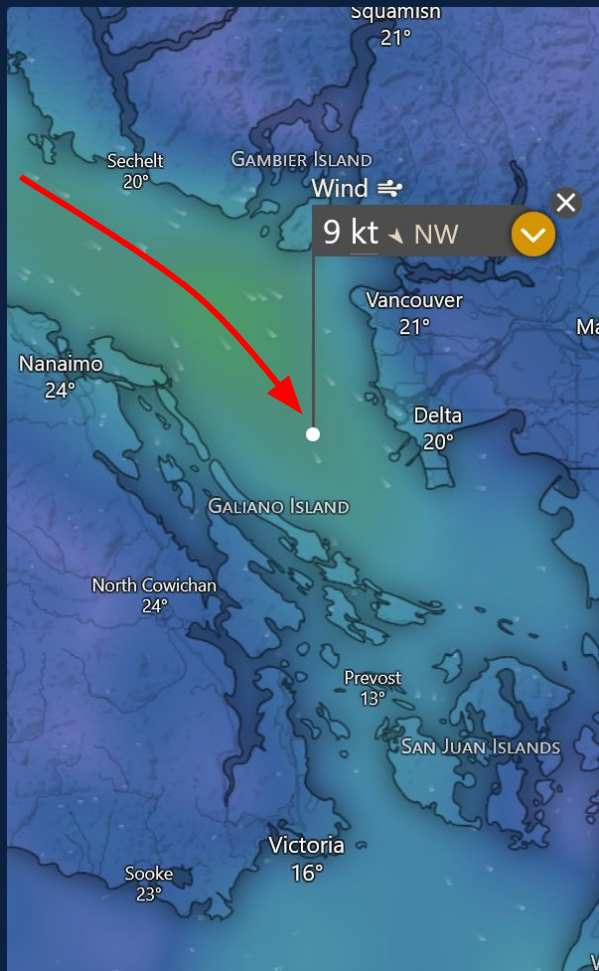
Friday

Wind Speed

Saturday

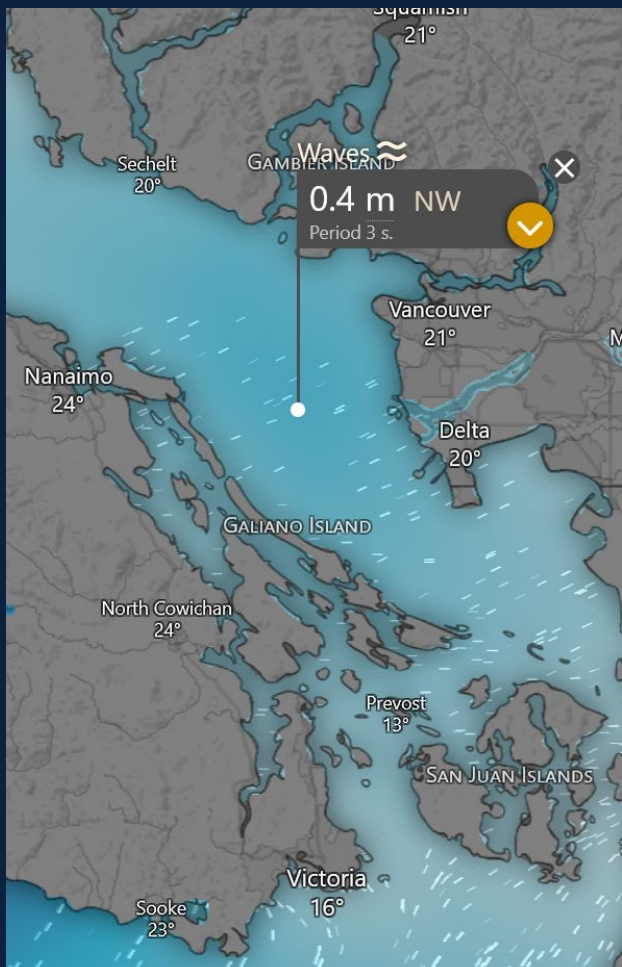
Wind Speed

Sunday



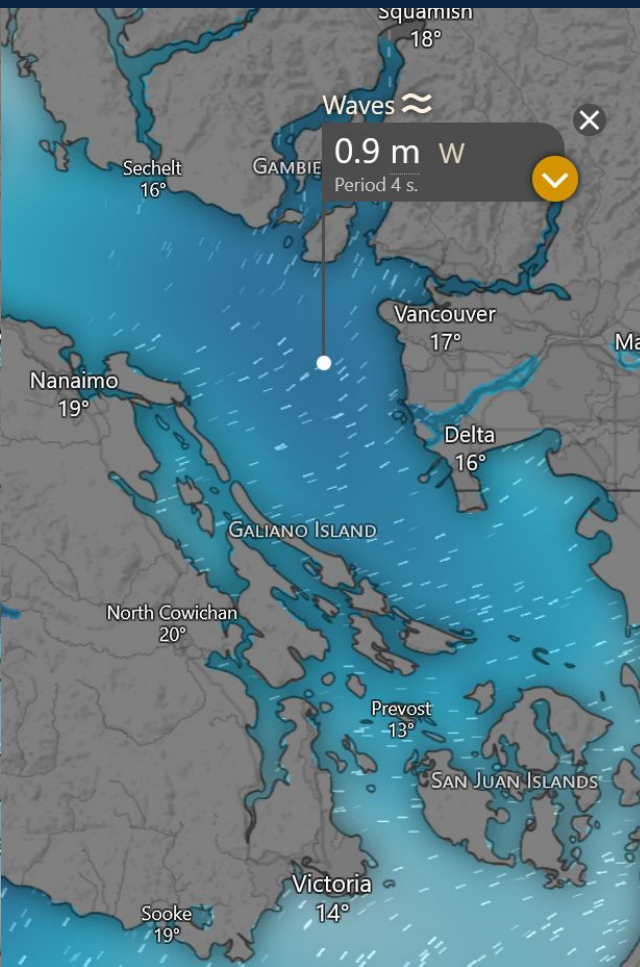
Friday

Wave Height

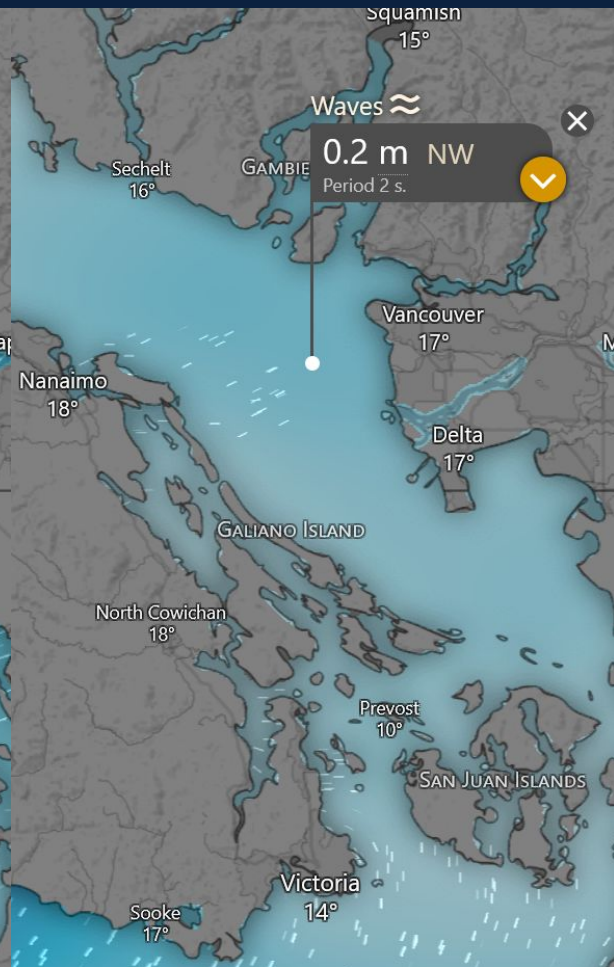


Saturday

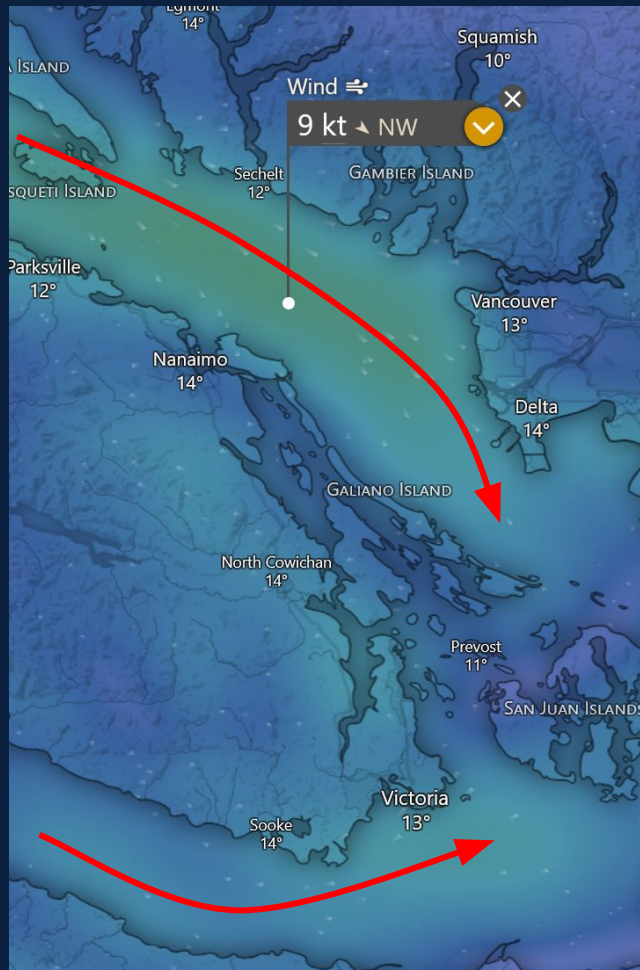
Wave Height



Sunday



Thursday Wind Speed



Friday Wind Speed

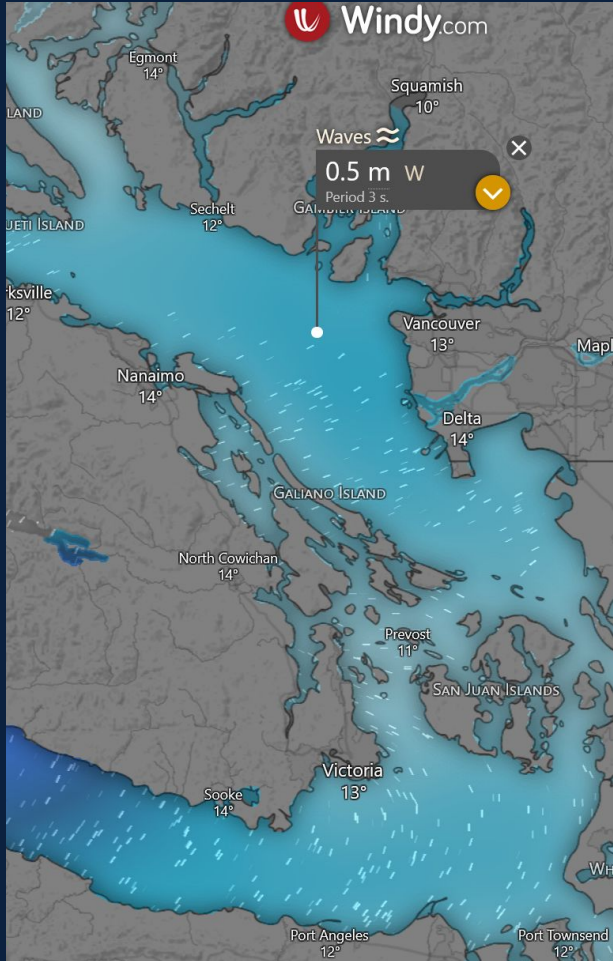


Saturday Wind Speed



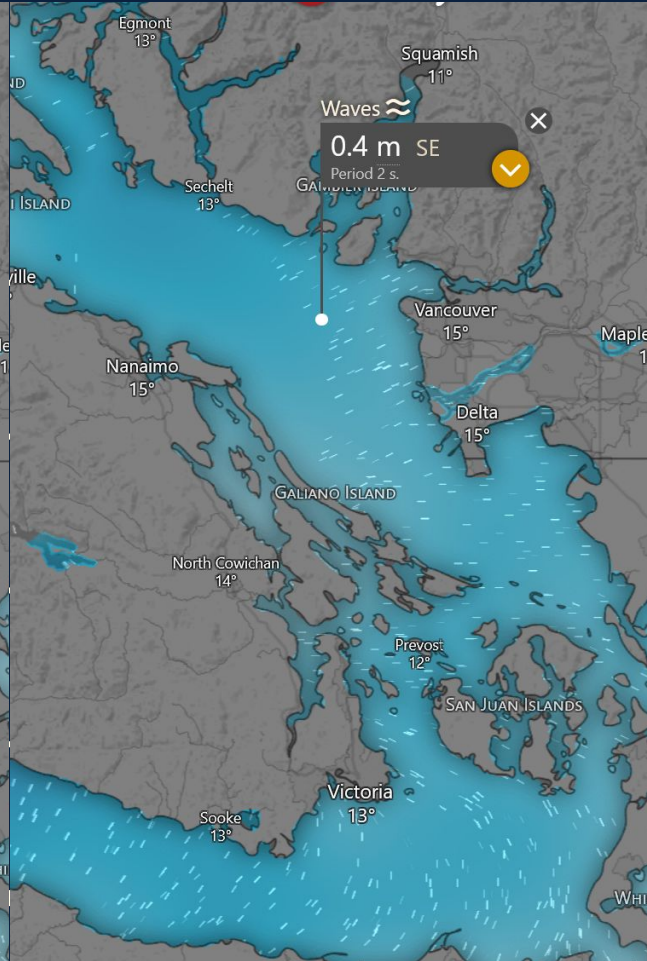
Wave Height

Thursday



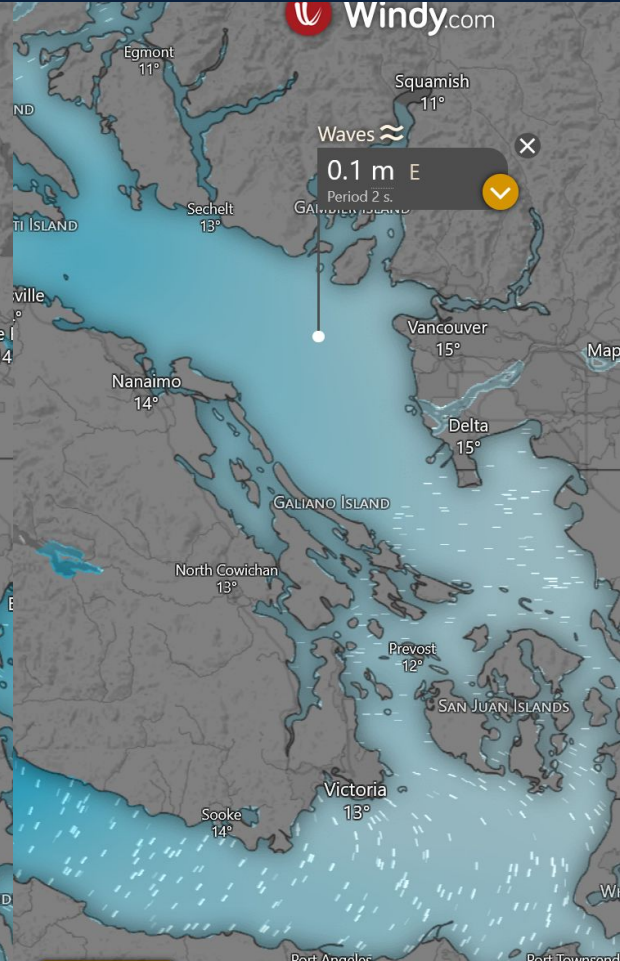
Wave Height

Friday



Wave Height

Saturday



Part 3 - Planning your trip

Where Should I Go ???

Howe Sound

- Gambier Island
 - 4 different coves on south shore

- Keats Island
 - Plumper Cove

Gulf Islands

- Nanaimo
 - Saisutshun (Newcastle Island)

- Decourcy
 - Pirates Cove

- Galiano
 - Montague Harbour

- Saltspring
 - Ganges

- Saturna
 - Winter Cove

Sunshine Coast

- Thormanby Island
 - Buccaneer Bay

- Lasqueti Island
 - Scottie Bay

- Hornby Island
 - Tribune Bay

Maps for orientation purposes only, not for navigation

Gambier Isl.

Keats Isl.

Bowen Isl.

Shoal Channel

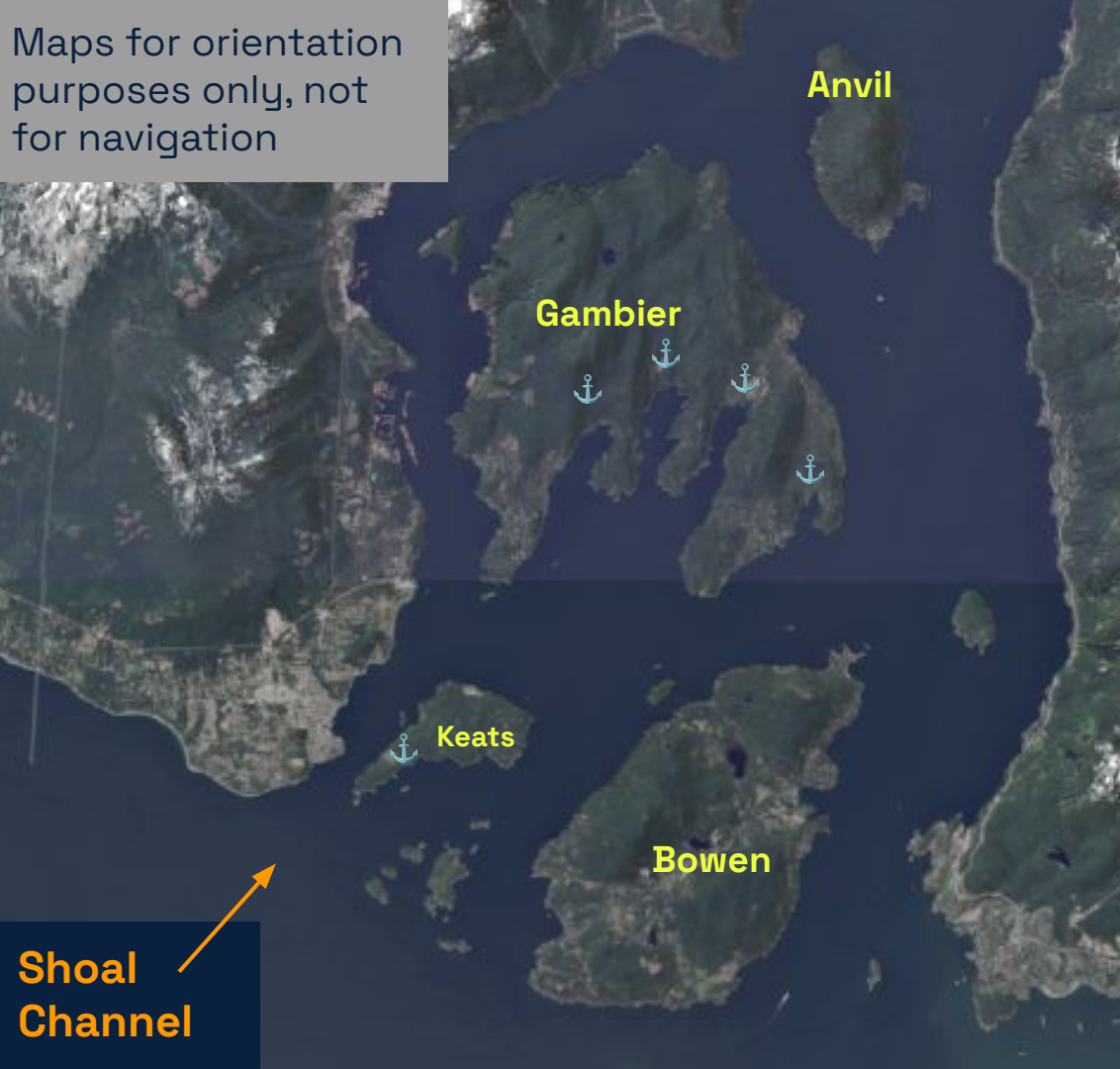
Rock hazards

Howe Sound

Hazards

- Wind
 - Generally flows South in overnight
 - Generally flows North during the day
 - Can be very windy.
- Unmarked rocks
 - Paisley Group between Keats and Bowen
 - Shoal Channel between Keats and Gibsons
- Traffic
 - Ferry traffic to/from Horseshoe Bay
 - Commercial traffic in/out of harbour
 - Barge traffic up/down Howe Sound

Maps for orientation purposes only, not for navigation



Howe Sound

Anchorage

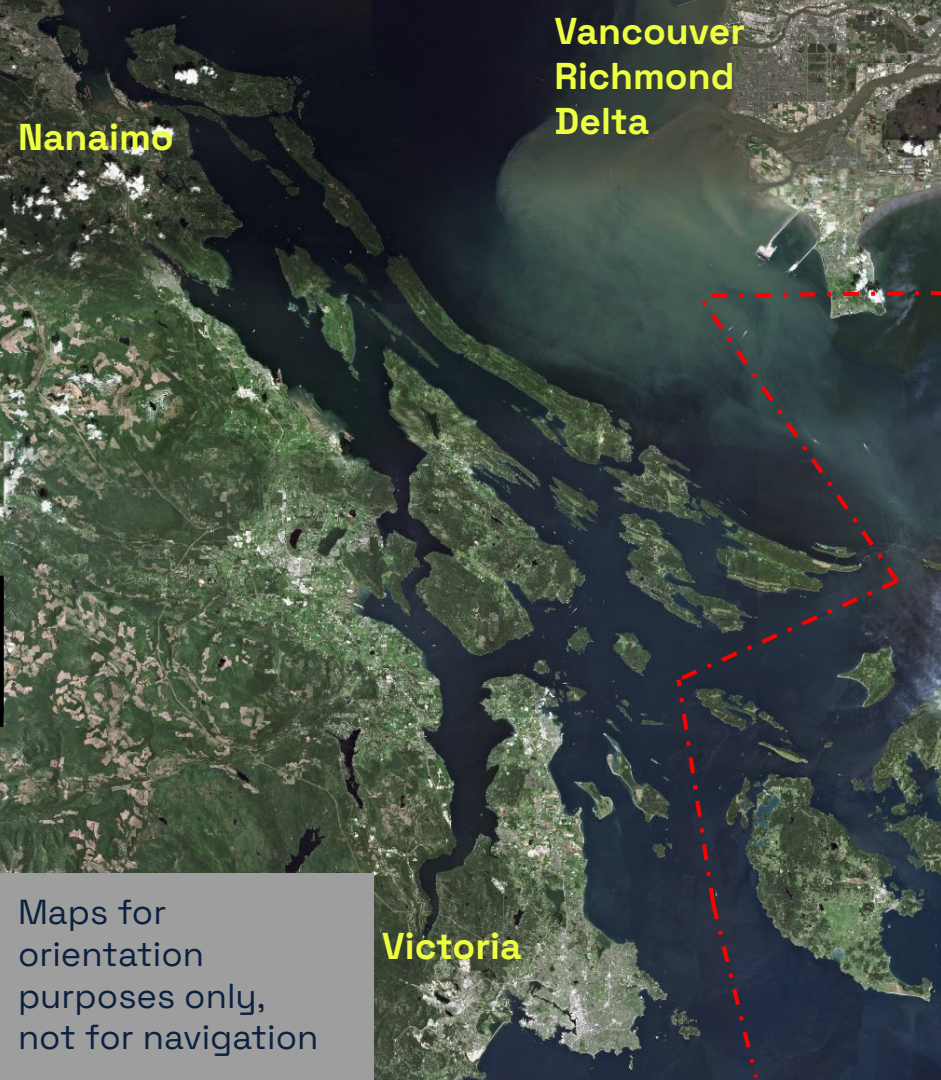
Keats Island

- Plumper Cove
- Mooring balls, lots of space for anchoring

Gambier Island

- 4 coves, each with own challenges
- Good hiking and walking ashore

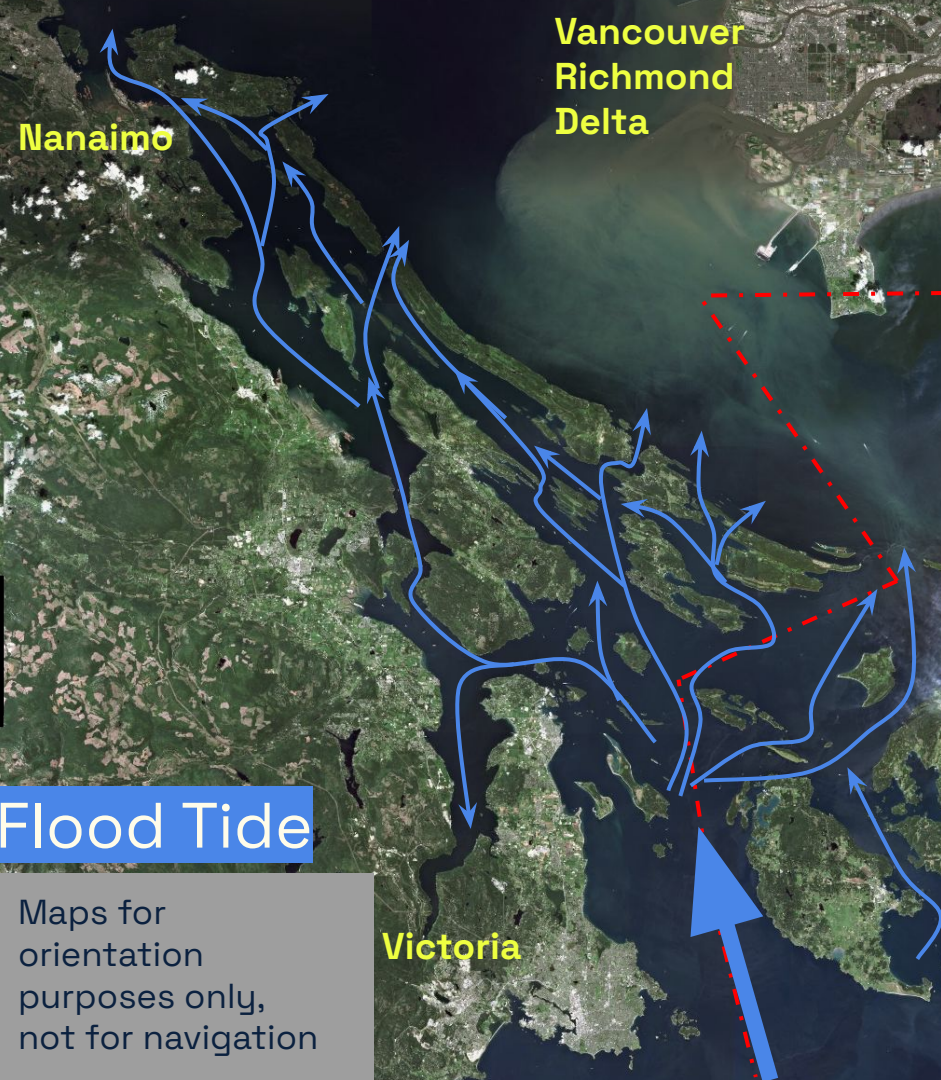
Shoal Channel



Gulf Islands

Hazards

- Crossing the Strait of Georgia
 - Can be very choppy and unpleasant
 - Can be downright dangerous.
- Tidal Passes
 - Tidal runs can exceed 5-10 knots
 - Impossible against the current
 - Dangerous with the current
 - No way through if you arrive late.
 - Slack tide brings commercial vessels
- Unmarked rocks and hazards
 - Tons of rocks in the area. Stick to channels.
 - Logs and deadheads floating around.
- Navy training area WG North of Nanaimo



Gulf Islands

Tidal Passes

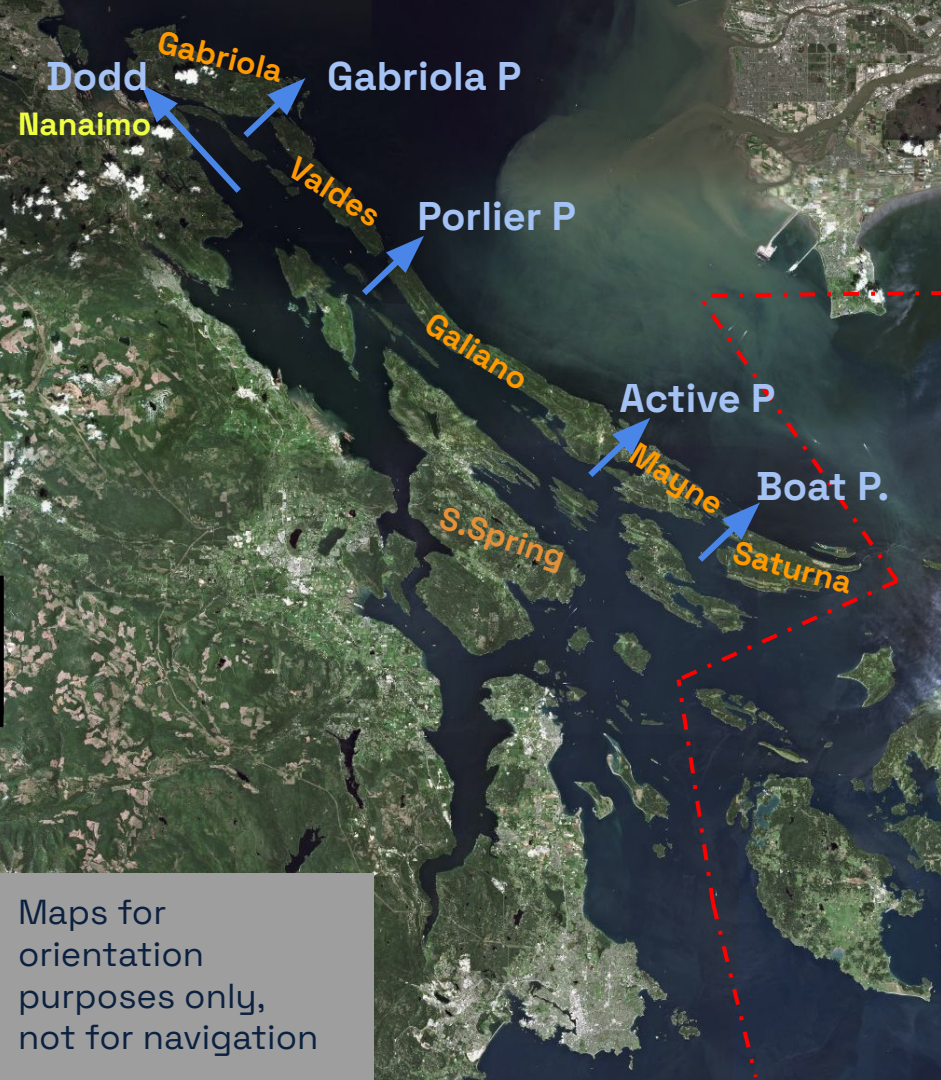
- Active Pass - Used by BC Ferries - avoid
- Porlier Pass
- Gabriola Passage
- Dodd Narrows
- Boat Passage

... The list goes on

Flood Tide

Maps for orientation purposes only, not for navigation

Victoria



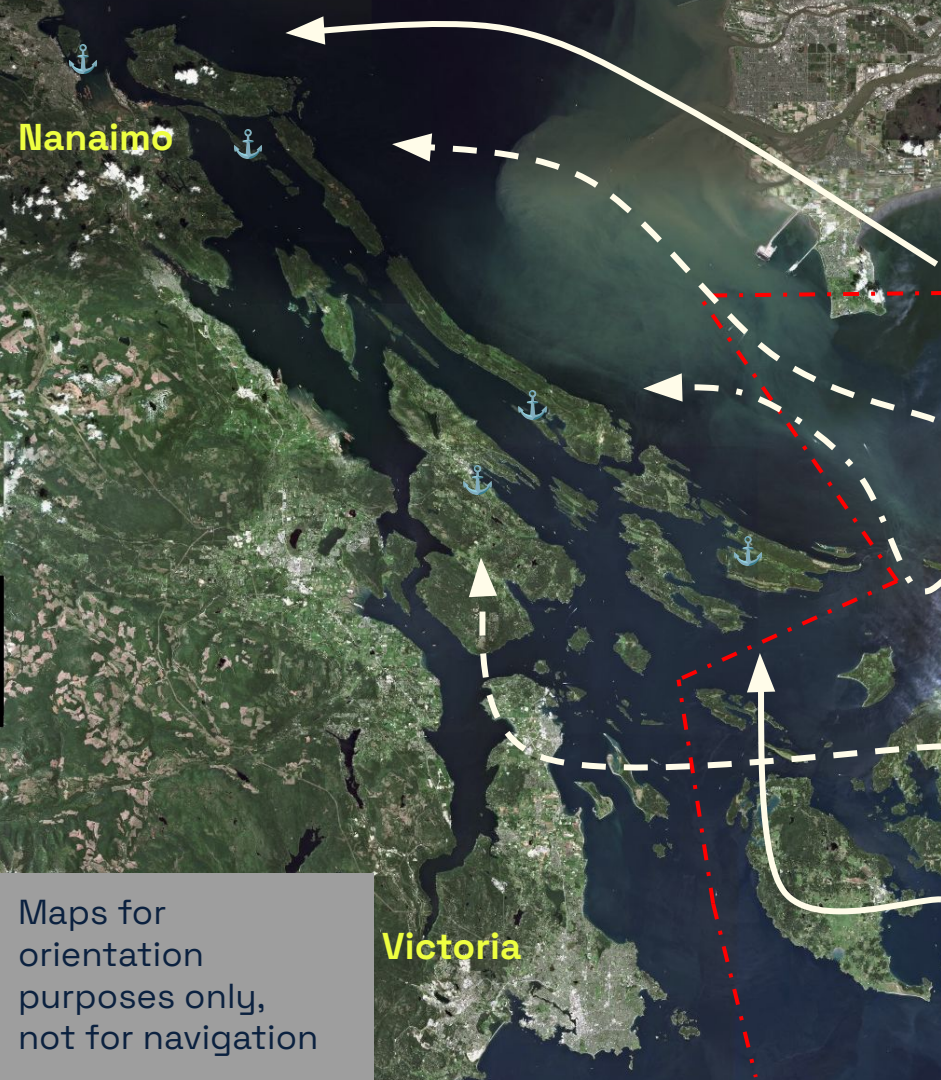
Gulf Islands

Tidal Passes

- Active Pass - Used by BC Ferries - avoid
- Porlier Pass
- Gabriola Passage
- Dodd Narrows
- Boat Passage

Plan your arrival time 1-2 hrs
before slack tide
- Allows for a late-arrival...

Maps for
orientation
purposes only,
not for navigation



Gulf Islands

Good Anchorages

Nanaimo

- Saysutshun (Newcastle Island) - Nice and easy

Decourcy

- Pirates Cove - Tight entry, requires stern tie

Galiano

- Montague Harbour - Wide open, many options

Saltspring

- Ganges - Fun town!

Saturna

- Winter Cove - Excellent.

Maps for orientation purposes only, not for navigation

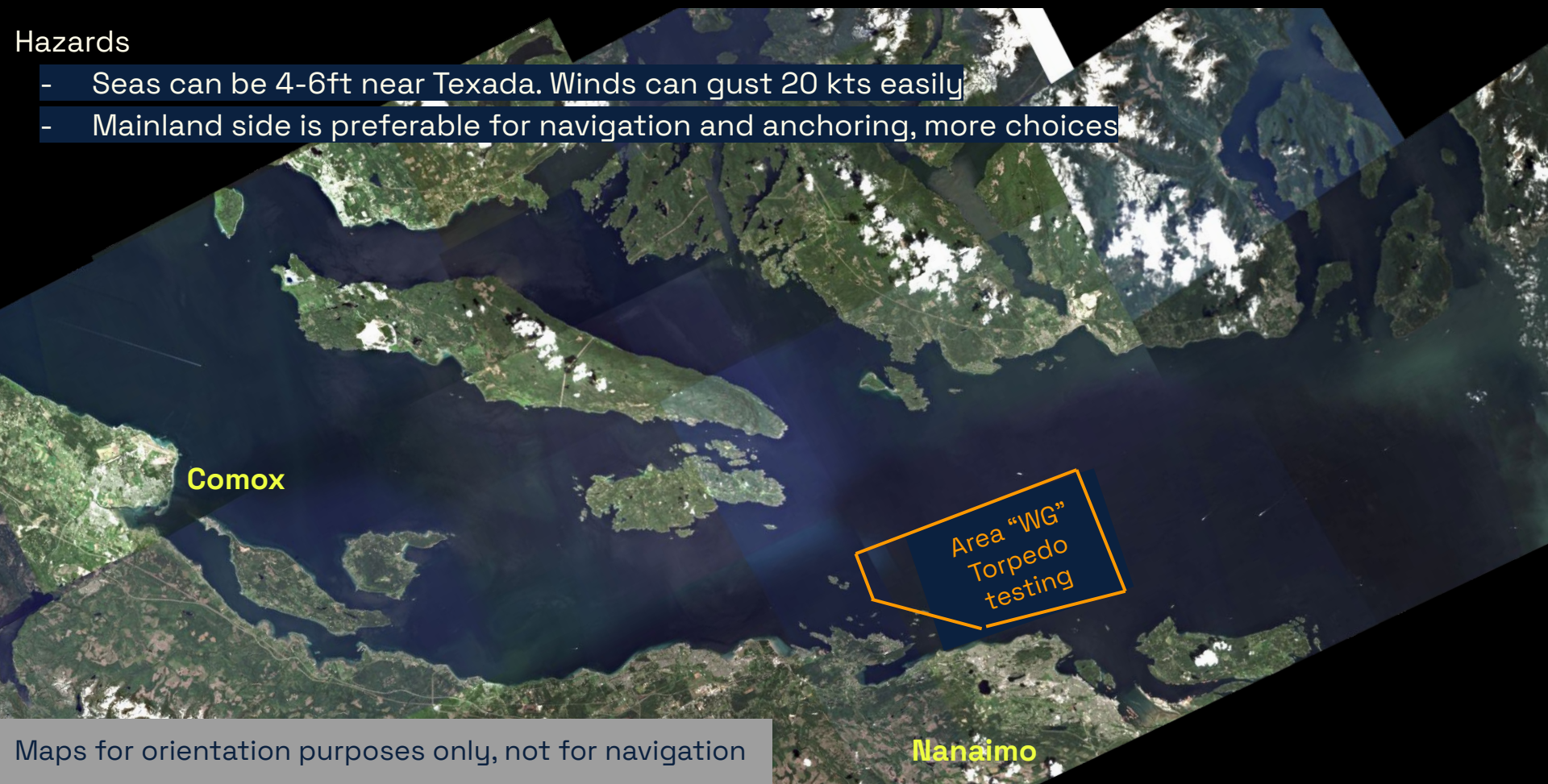
Victoria

Sunshine Coast

Hazards

- Seas can be 4-6ft near Texada. Winds can gust 20 kts easily
- Mainland side is preferable for navigation and anchoring, more choices

Comox



Area "WG"
Torpedo
testing

Nanaimo

Maps for orientation purposes only, not for navigation

Sunshine C.



Area "WG"
Torpedo
testing

Your first overnight

Days before

Check 5-day wx forecast

Float plan

Provisions, fuel
Consider doing this the night before.

The morning

Check updated marine forecast

Confirm tides and currents for each passage

While underway

Monitor Ch.16
Large vessels call when making transits

Float Plan Update - at least once per day if possible, your plans will change.

Your first overnight

Anchoring for the Night

Scope

Check again!

What's the maximum depth overnight?

What's the minimum depth? Are you comfortable with that?

Are you going to bump into any rocks while you swing???

How do you know if you're set?

Take two bearings to known objects

Check a few times through the night

Anchor Alarm

Consider setting an anchor alarm - App on your phone etc

Anchor Lighting

Turn on Anchor Light

Your first overnight

Problems!

Anchor dragging at 2am

Set an anchor alarm. Set the right scope. Re-anchor

Wind builds quickly

Reef early! Heave-to if you need to reset.

Onboard injury

First aid training, knowing when to call for help

Engine won't start

**Practice sailing out of an anchorage.
If too tight to do so, call for help.**

Go explore!

